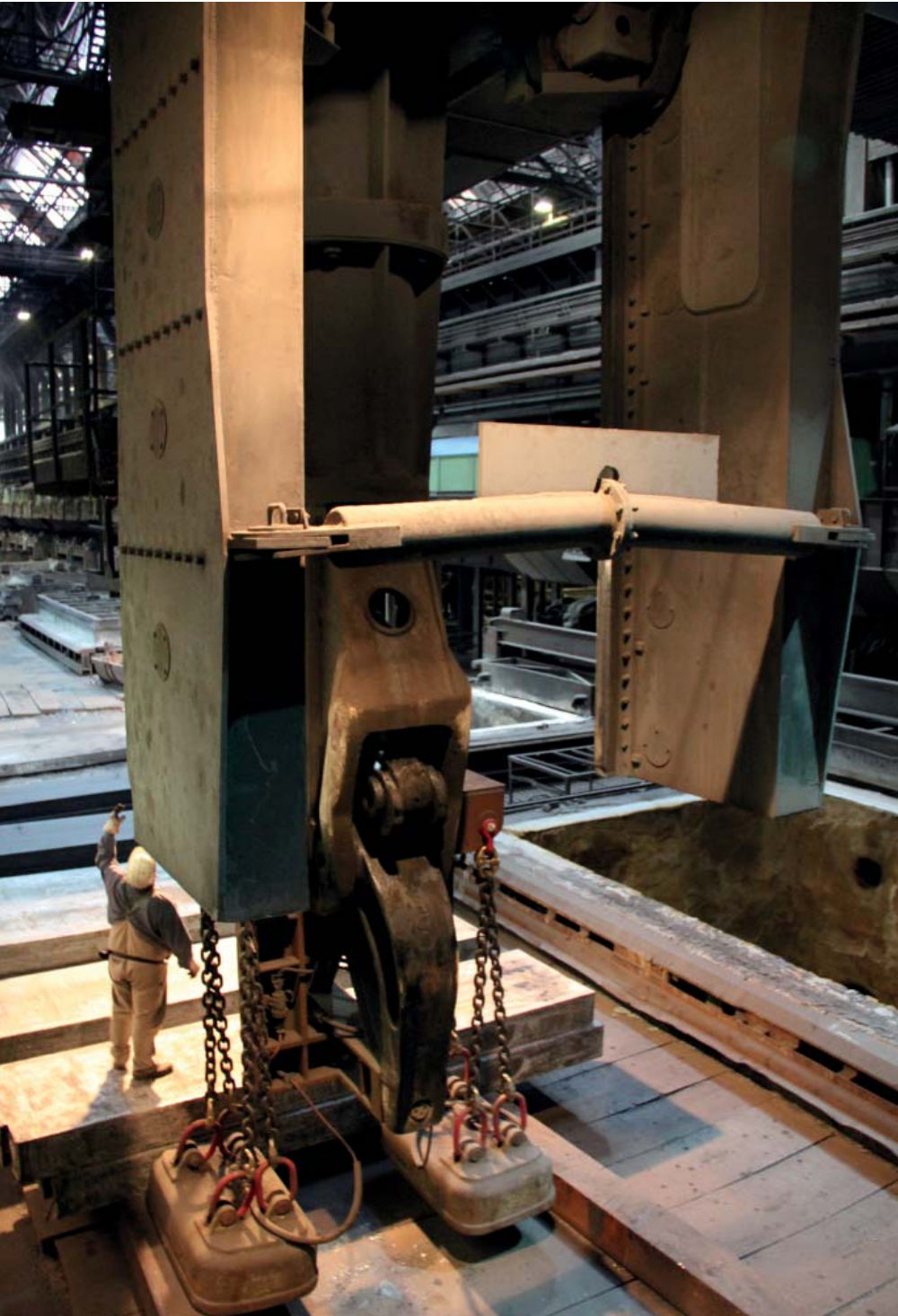


LKVE Force Transmitter



The PIAB LKVE is a force transmitter which is attached to a stationary rope part. PIAB LKVE gives a 4-20mA output signal. It has high repeatability, is made for use in aggressive industrial environments and fully conforms to IP 67.

GIGAsense

Gigasense products within Force Measurement and Crane Safety are well known high quality products, built from many years' experience and used by leading heavy duty industry around the world.

Gigasense products meet the highest demands of performance level requirements.

We are represented by many selected local partners in more than 30 countries on six continents.

LKVE Force Transmitter

Range of application

The PIAB LKVE combined with a PIAB Electronic Unit or a PIAB Crane Safety Monitor is intended for use as an overload guard or a slack rope switch in lifting equipment and is made in a range for forces up to 16000 kp in single rope part and for max. 44 mm rope diameter.

Function

The PIAB LKVE consists of a load cell with amplifier and an electronic signal processing unit. The PIAB LKVE is attached to a stationary rope part. The rope is deflected through a slight angle between the two wheels and the clamping jaw. When loaded, the rope tends to straighten and applies a force on the load cell. The foil gauge of the load cell is fed with a constant tension from the transmitter amplifier. A signal is received in return, which is proportional to the force on the load cell. This signal is amplified and is converted to a current signal of 4 - 20 mA. The strong signal makes it possible for the distance between the force transmitter and the electronic unit to be up to 550 yards (500 m).

Protection against corrosion

The PIAB LKVE is Zinc coated and yellow chromated. The bearings of the hardened wheels are sealed with O-rings and lubricated with MoS.

The load cell and the amplifier are hermetically sealed and meet the requirements for international protection specification class IP 67 according to IEC 144.

Safety

The PIAB LKVE is not directly included in the rope system and does not affect the construction of the lifting equipment. The clever design of the clamping jaw keeps the measurement test result unaffected by the changes in the rope diameter that occur after some use. Together with PIAB electronics, the PIAB LKVE is protected against faulty operation and adopts overload mode in all combinations of cable breakdowns or short circuits that can arise due to cable damage. The load cell can be mechanically overloaded by 100% nominal load without affecting the accuracy of measurement.

Measuring Signal

The PIAB LKVE gives a defined output of 4-20 mA, which is hard to disturb.

The strong signal manages serial resistances of up to 250 ohm and the cable can therefore be lengthened without special demands on joints or cable lengths.

The unshielded cable, 4x1/16 sq.inch (4x1.5 mm²) transfers supply voltage to the transmitter amplifier and load cell as well as measuring signal to the PIAB Electronic Unit. The cable can be placed close to other live cables without affecting the measuring signal.



Technical Data

CONNECTION

The supply voltage to the transducer is 15-30 VDC. Power consumption 60 mA.

WORKING TEMPERATURES

-4°F - +158°F (-20°C - +70°C). The load cell is temperature compensated with regard to both span and zero-offset.

ACCURACY

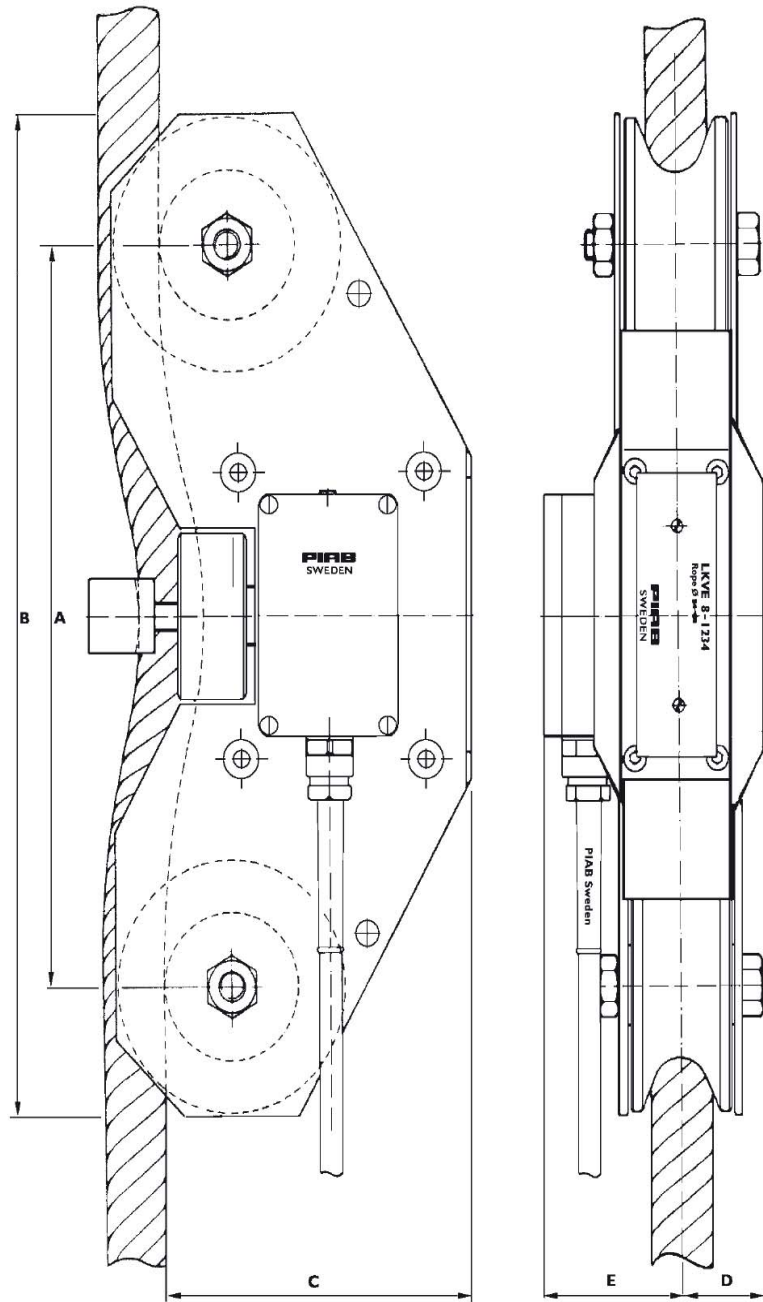
The repeatability and linearity of the load cell are better than 0.1%. Mounted on the rope the LKVE has a repeatability of 0.1-1.5% and a linear deviation of 0-4%. The variations arise from differing rope characteristics.

INTERNATIONAL PROTECTION SPECIFICATION CLASS

IP 67, according to IEC 144.

LKVE WITHOUT TRANSDUCER AMPLIFIER PIAB LKVE

is also available without transducer amplifier and is then called LKVEI. The impedance of the transducer bridge is 350Ω and the sensitivity 1.6 mV/V nominally. Recommended supply voltage 10 VDC.



The drawing is for an PIAB LKVE. The measurements for different PIAB LKVE capacities are shown the table below. The other types are of a slightly different design.

TYPE	MAX.SWITCH VALUE IN LB.(KG)	FOR WIRE DIMENSION Ø IN INCHES AND (MM)	DEADWEIGHT IN LB. (KG)	DIMENSIONS IN INCHES AND (MM)				
				A	B	C	D	E
LKVE 1	2200 (1000)	3/16- 5/16 (5-8)	10 (5)	7.8740 (200)	10.7087 (272)	4.8031 (122)	1.1024 (28)	2.1654 (55)
LKVE 2	4400 (2000)	5/16- 15/32 (8-12)						
LKVE 4	8800 (4000)	15/32- 5/8 (12-16) 5/8- 25/32 (16-20)						
LKVE 8	17600 (8000)	5/8- 25/32 (16-20) 25/32- 15/16 (20-24)	26 (12)	11.8110 (300)	15.9853 (406)	5.5118 (140)	1.5354 (39)	2.4803 (63)
LKVE 12	26000 (12000)	15/16- 1.7/64 (28-32) 1.7/64- 1.1/4 (28-32) 1.1/4-1.27/64 (32-36)						
LKVE 16	35000 (16000)	1.1/4-1.27/64 (32-36) 1.27/64- 1.1/2 (36-40) 1.1/2- 1.3/4 (40-44)	48 (21)	11.8110 (300)	15.9853 (406)	5.5118 (140)	1.5354 (39)	2.4803 (63)



GIGAsense

QUALITY AND SERVICE TAKEN SERIOUSLY

GIGAsense AB • STATIONSVÄGEN 16 • SE-18450 ÅKERSBERGA • SWEDEN
PHONE: +46 (0)8 540 839 00 • E-MAIL: INFO@GIGAsense.SE

www.gigasense.se

